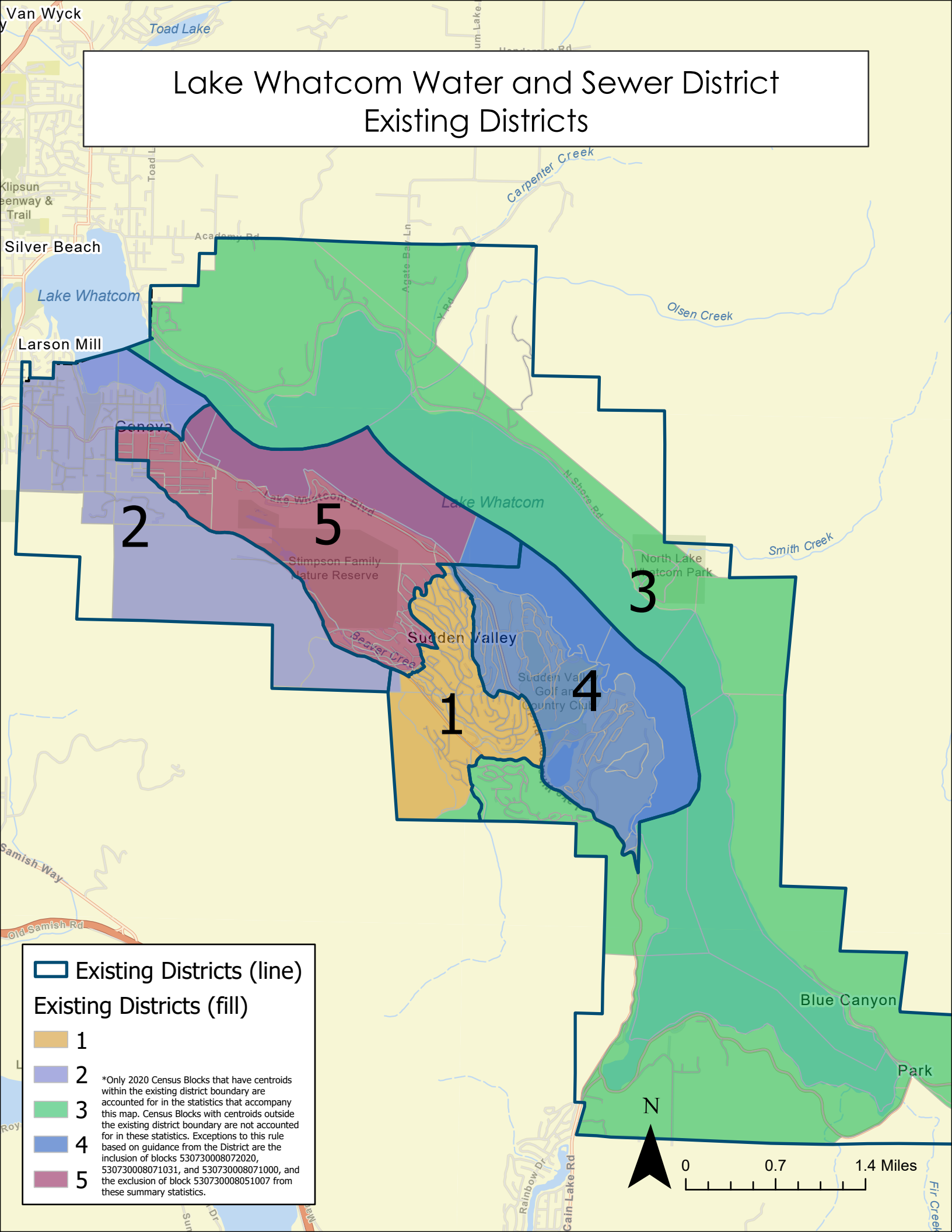


Lake Whatcom Water and Sewer District Existing Districts



 Existing Districts (line)

Existing Districts (fill)

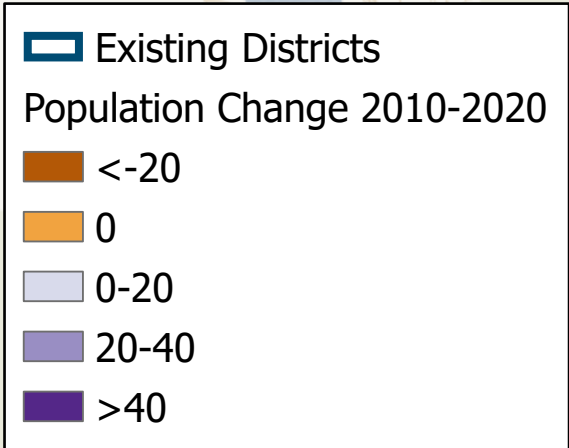
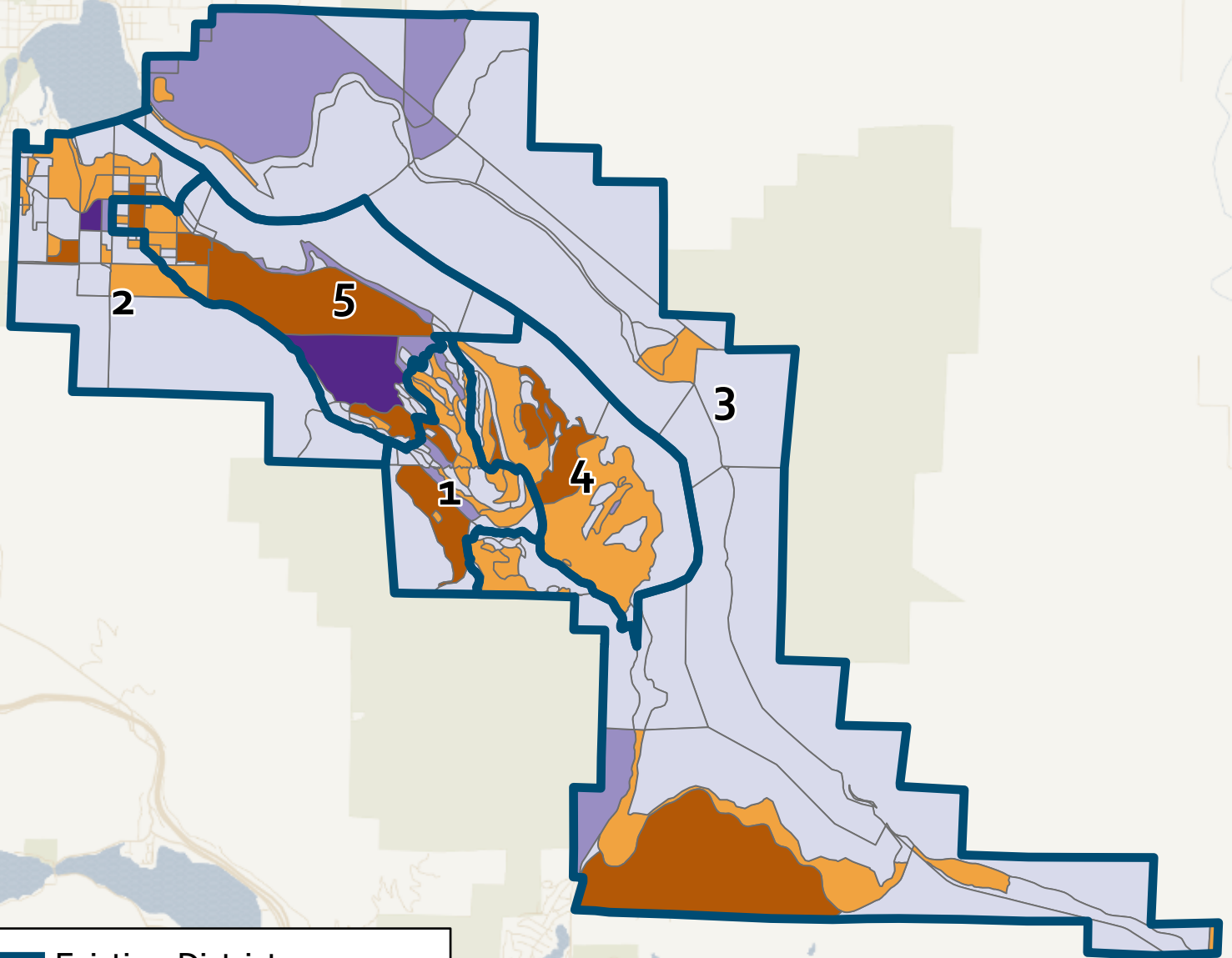
-  1
-  2
-  3
-  4
-  5

*Only 2020 Census Blocks that have centroids within the existing district boundary are accounted for in the statistics that accompany this map. Census Blocks with centroids outside the existing district boundary are not accounted for in these statistics. Exceptions to this rule based on guidance from the District are the inclusion of blocks 530730008072020, 530730008071031, and 530730008071000, and the exclusion of block 530730008051007 from these summary statistics.



0 0.7 1.4 Miles

Lake Whatcom Water and Sewer District Population Change 2010-2020 per Census Block



Lake Whatcom Water and Sewer District Redistricting Summary Statistics



Existing Districts – District Summary Statistics

02/04/2022

Equal Population Criterion

Ideal Population	2,142	
Overall Deviation	22.8%	
< 5.0%	5.0 - 10.0%	> 10.0%

Total Population & Deviation per District

District ID	Total Population	Over / Under Ideal	Deviation From Ideal
1	2,416	274	12.8%
2	1,927	-215	-10.0%
3	2,050	-92	-4.3%
4	2,185	43	2.0%
5	2,130	-12	-0.5%

2020 Census P.L. 94-171 Redistricting Data Summary Files - Total Population.

Total Population by Race/Ethnicity per District

District ID	White	Black or African American	American Indian or Alaska Native	Asian	Native Hawaiian and Pacific Islander	Some Other Race	Two or More Races	Hispanic/Latino
1	81.0%	1.2%	1.3%	2.2%	0.1%	0.4%	7.0%	6.7%
2	85.4%	0.5%	0.7%	2.8%	0.2%	0.4%	6.2%	3.8%
3	80.8%	0.2%	0.4%	3.6%	0.4%	0.6%	8.6%	5.3%
4	79.6%	0.9%	0.5%	3.4%	0.1%	0.5%	6.9%	8.0%
5	80.2%	1.3%	1.2%	2.8%	0.0%	0.3%	7.3%	6.8%

2020 Census P.L. 94-171 Redistricting Data Summary Files - Total Population by Race and Hispanic/Latino Origin.

VAP by Race/Ethnicity per District

District	White	Black or African American	American Indian or Alaska Native	Asian	Native Hawaiian and Pacific Islander	Some Other Race	Two or More Races	Hispanic/Latino
1	83.0%	1.3%	1.3%	2.2%	0.1%	0.4%	5.9%	5.8%
2	86.6%	0.6%	0.6%	2.8%	0.3%	0.5%	5.5%	3.1%
3	85.0%	0.1%	0.4%	3.9%	0.5%	0.5%	4.9%	4.7%
4	82.6%	0.8%	0.4%	3.7%	0.2%	0.6%	5.6%	6.1%
5	82.4%	1.1%	1.1%	3.4%	0.0%	0.4%	6.7%	4.9%

2020 Census P.L. 94-171 Redistricting Data Summary Files - Voting-age Population (VAP) by Race and Hispanic/Latino Origin.

Lake Whatcom Water and Sewer District Redistricting Summary Statistics



Existing Districts – District Summary Statistics

02/04/2022

CVAP by Race/Ethnicity per District

District ID	White	Black or African American	American Indian or Alaska Native	Asian	Native Hawaiian and Pacific Islander	Two or More Races	Hispanic/Latino
1	87.3%	0.3%	0.4%	3.3%	0.1%	1.3%	7.3%
2	92.7%	0.1%	0.6%	0.4%	0.0%	4.3%	2.1%
3	87.5%	0.8%	3.0%	1.5%	0.3%	2.5%	4.1%
4	85.8%	1.6%	2.1%	1.8%	0.4%	2.5%	5.7%
5	84.8%	0.0%	0.3%	4.7%	1.2%	2.9%	6.1%

2015-2019 American Community Survey Citizen Voting-age Population (CVAP) by Race and Ethnicity Special Tabulation. Rounding of estimates may lead to summation of race/ethnicity percentages not equal to 100% (+/- 1%).

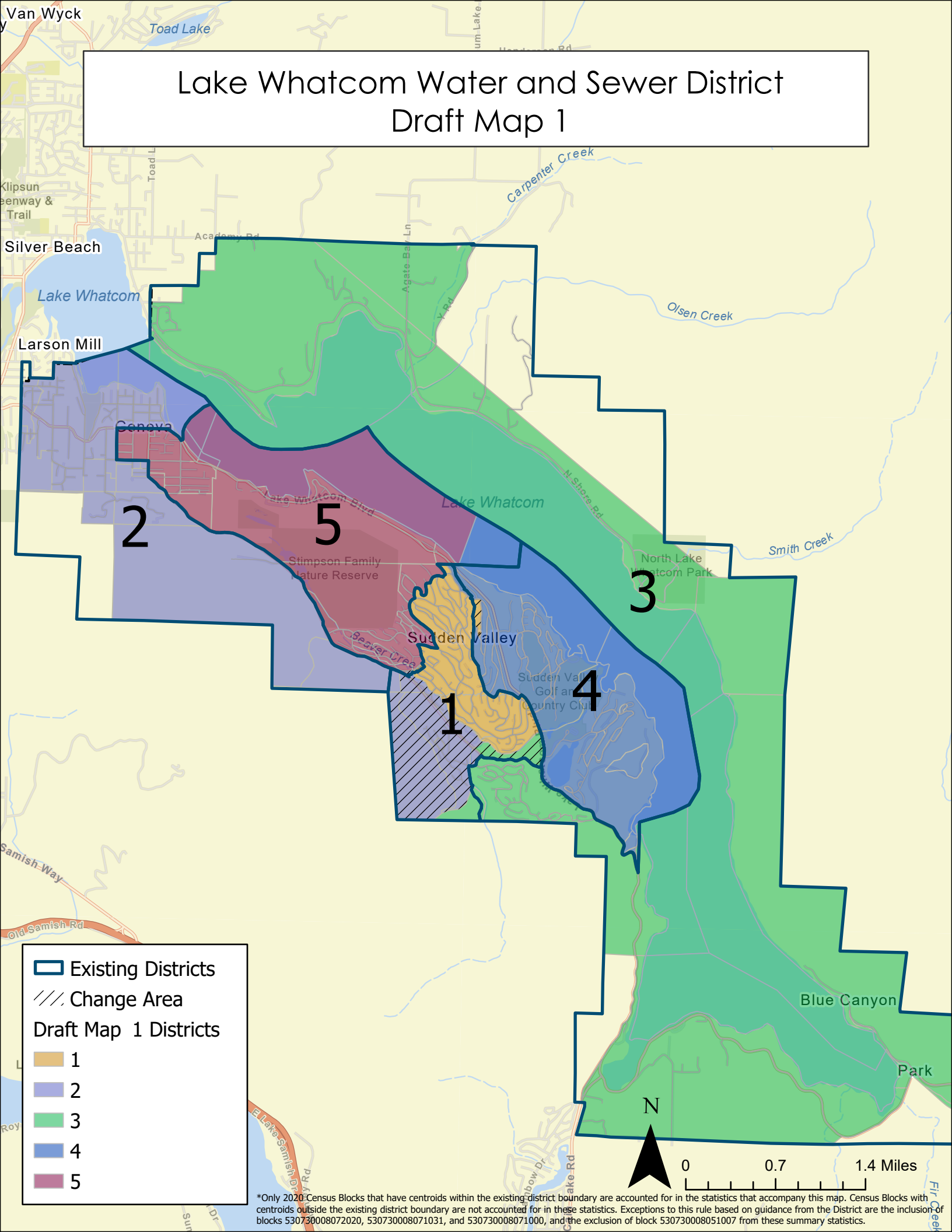
Contiguity Criterion

Are all districts contiguous at more than a point or by bridge or by regular ferry service? **Yes**

Compactness Criterion

Where it does not conflict with other mandatory criteria, districts are compact such that nearby areas of population are not bypassed for more distant areas of population: **Yes**

Lake Whatcom Water and Sewer District Draft Map 1



Existing Districts
 Change Area
Draft Map 1 Districts
 1
 2
 3
 4
 5

N

*Only 2020 Census Blocks that have centroids within the existing district boundary are accounted for in the statistics that accompany this map. Census Blocks with centroids outside the existing district boundary are not accounted for in these statistics. Exceptions to this rule based on guidance from the District are the inclusion of blocks 530730008072020, 530730008071031, and 530730008071000, and the exclusion of block 530730008051007 from these summary statistics.

Lake Whatcom Water and Sewer District Redistricting Summary Statistics



Draft Map 1 – District Summary Statistics

02/03/2022

*Only 2020 Census Blocks that have centroids within the existing district boundary are displayed in the map and accounted for in these statistics. Census Blocks with centroids outside the existing district boundary are not accounted for in these statistics. Exceptions to this rule based on guidance from the District are the inclusion of blocks 530730008072020, 530730008071031, and 530730008071000, and the exclusion of block 530730008051007 from these summary statistics.

Equal Population Criterion

Ideal Population	2,142
Overall Deviation	4.7%

< 5.0% 5.0 - 10.0% > 10.0%

Total Population & Deviation per District

District ID	Total Population	Over / Under Ideal	Deviation From Ideal
1	2,145	3	0.2%
2	2,190	48	2.3%
3	2,089	-53	-2.5%
4	2,154	12	0.6%
5	2,130	-12	-0.5%

2020 Census P.L. 94-171 Redistricting Data Summary Files - Total Population.

Total Population by Race/Ethnicity per District

District ID	White	Black or African American	American Indian or Alaska Native	Asian	Native Hawaiian and Pacific Islander	Some Other Race	Two or More Races	Hispanic/Latino
1	80.2%	1.4%	1.5%	2.4%	0.1%	0.4%	7.1%	6.9%
2	85.7%	0.5%	0.6%	2.6%	0.2%	0.4%	6.3%	3.8%
3	80.8%	0.2%	0.4%	3.5%	0.4%	0.6%	8.5%	5.5%
4	79.6%	0.9%	0.6%	3.5%	0.1%	0.5%	6.8%	8.0%
5	80.2%	1.3%	1.2%	2.8%	0.0%	0.3%	7.3%	6.8%

2020 Census P.L. 94-171 Redistricting Data Summary Files - Total Population by Race and Hispanic/Latino Origin.

VAP by Race/Ethnicity per District

District	White	Black or African American	American Indian or Alaska Native	Asian	Native Hawaiian and Pacific Islander	Some Other Race	Two or More Races	Hispanic/Latino
1	82.0%	1.5%	1.5%	2.3%	0.1%	0.4%	5.9%	6.3%
2	86.9%	0.5%	0.6%	2.7%	0.2%	0.4%	5.7%	3.0%
3	85.2%	0.1%	0.4%	3.8%	0.5%	0.5%	4.8%	4.7%
4	82.6%	0.8%	0.4%	3.8%	0.2%	0.6%	5.5%	6.2%
5	82.4%	1.1%	1.1%	3.4%	0.0%	0.4%	6.7%	4.9%

2020 Census P.L. 94-171 Redistricting Data Summary Files - Voting-age Population (VAP) by Race and Hispanic/Latino Origin.

Lake Whatcom Water and Sewer District Redistricting Summary Statistics

Draft Map 1 – District Summary Statistics

02/03/2022



CVAP by Race/Ethnicity per District

District ID	White	Black or African American	American Indian or Alaska Native	Asian	Native Hawaiian and Pacific Islander	Two or More Races	Hispanic/Latino
1	87.2%	0.4%	0.5%	3.2%	0.1%	1.4%	7.3%
2	92.2%	0.1%	0.5%	0.7%	0.0%	3.9%	2.8%
3	87.5%	0.8%	3.0%	1.6%	0.3%	2.4%	4.2%
4	85.8%	1.6%	2.1%	1.8%	0.4%	2.5%	5.7%
5	84.8%	0.0%	0.3%	4.7%	1.2%	2.9%	6.1%

2015-2019 American Community Survey Citizen Voting-age Population (CVAP) by Race and Ethnicity Special Tabulation. Rounding of estimates may lead to summation of race/ethnicity percentages not equal to 100% (+/- 1%).

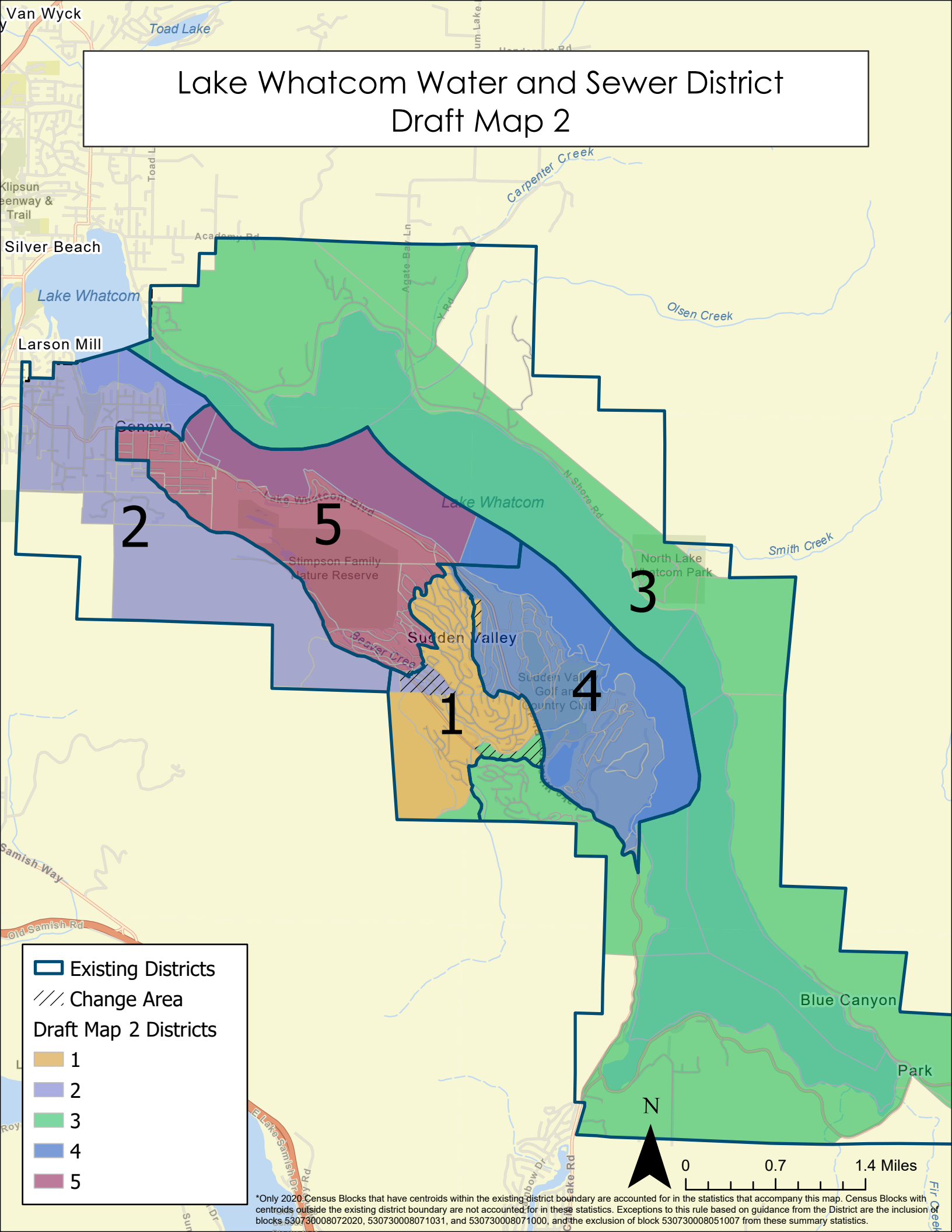
Contiguity Criterion

Are all districts contiguous at more than a point or by bridge or by regular ferry service? **Yes**

Compactness Criterion

Where it does not conflict with other mandatory criteria, districts are compact such that nearby areas of population are not bypassed for more distant areas of population: **Yes**

Lake Whatcom Water and Sewer District Draft Map 2



- Existing Districts
- Change Area
- Draft Map 2 Districts**
- 1
- 2
- 3
- 4
- 5

*Only 2020 Census Blocks that have centroids within the existing district boundary are accounted for in the statistics that accompany this map. Census Blocks with centroids outside the existing district boundary are not accounted for in these statistics. Exceptions to this rule based on guidance from the District are the inclusion of blocks 530730008072020, 530730008071031, and 530730008071000, and the exclusion of block 530730008051007 from these summary statistics.

Lake Whatcom Water and Sewer District Redistricting Summary Statistics



Draft Map 2 – District Summary Statistics

02/03/2022 *Only 2020 Census Blocks that have centroids within the existing district boundary are displayed in the map and accounted for in these statistics. Census Blocks with centroids outside the existing district boundary are not accounted for in these statistics. Exceptions to this rule based on guidance from the District are the inclusion of blocks 530730008072020, 530730008071031, and 530730008071000, and the exclusion of block 530730008051007 from these summary statistics.

Equal Population Criterion

Ideal Population	2,142
Overall Deviation	4.2%
< 5.0% 5.0 - 10.0% > 10.0%	

Total Population & Deviation per District

District ID	Total Population	Over / Under Ideal	Deviation From Ideal
1	2,155	13	0.6%
2	2,180	38	1.8%
3	2,089	-53	-2.5%
4	2,154	12	0.6%
5	2,130	-12	-0.5%

2020 Census P.L. 94-171 Redistricting Data Summary Files - Total Population.

Total Population by Race/Ethnicity per District

District ID	White	Black or African American	American Indian or Alaska Native	Asian	Native Hawaiian and Pacific Islander	Some Other Race	Two or More Races	Hispanic/Latino
1	81.8%	1.1%	1.2%	2.5%	0.1%	0.3%	6.4%	6.5%
2	84.1%	0.7%	0.9%	2.5%	0.2%	0.5%	7.0%	4.2%
3	80.8%	0.2%	0.4%	3.5%	0.4%	0.6%	8.5%	5.5%
4	79.6%	0.9%	0.6%	3.5%	0.1%	0.5%	6.8%	8.0%
5	80.2%	1.3%	1.2%	2.8%	0.0%	0.3%	7.3%	6.8%

2020 Census P.L. 94-171 Redistricting Data Summary Files - Total Population by Race and Hispanic/Latino Origin.

VAP by Race/Ethnicity per District

District	White	Black or African American	American Indian or Alaska Native	Asian	Native Hawaiian and Pacific Islander	Some Other Race	Two or More Races	Hispanic/Latino
1	83.6%	1.1%	1.3%	2.4%	0.1%	0.4%	5.3%	5.8%
2	85.4%	0.8%	0.8%	2.6%	0.2%	0.5%	6.3%	3.4%
3	85.2%	0.1%	0.4%	3.8%	0.5%	0.5%	4.8%	4.7%
4	82.6%	0.8%	0.4%	3.8%	0.2%	0.6%	5.5%	6.2%
5	82.4%	1.1%	1.1%	3.4%	0.0%	0.4%	6.7%	4.9%

2020 Census P.L. 94-171 Redistricting Data Summary Files - Voting-age Population (VAP) by Race and Hispanic/Latino Origin.

Lake Whatcom Water and Sewer District Redistricting Summary Statistics



Draft Map 2 – District Summary Statistics

02/03/2022

CVAP by Race/Ethnicity per District

District ID	White	Black or African American	American Indian or Alaska Native	Asian	Native Hawaiian and Pacific Islander	Two or More Races	Hispanic/Latino
1	87.2%	0.4%	0.5%	3.2%	0.1%	1.4%	7.3%
2	92.3%	0.1%	0.5%	0.6%	0.0%	4.0%	2.6%
3	87.5%	0.8%	3.0%	1.6%	0.3%	2.4%	4.2%
4	85.8%	1.6%	2.1%	1.8%	0.4%	2.5%	5.7%
5	84.8%	0.0%	0.3%	4.7%	1.2%	2.9%	6.1%

2015-2019 American Community Survey Citizen Voting-age Population (CVAP) by Race and Ethnicity Special Tabulation. Rounding of estimates may lead to summation of race/ethnicity percentages not equal to 100% (+/- 1%).

Contiguity Criterion

Are all districts contiguous at more than a point or by bridge or by regular ferry service? **Yes**

Compactness Criterion

Where it does not conflict with other mandatory criteria, districts are compact such that nearby areas of population are not bypassed for more distant areas of population: **Yes**