

Redistricting Overview

Line drawing process overview



High-level process flow

1. Data collection & Baseline conditions



2. Springboard



3. Draft map



4. Final map

Public hearing testimony and Email comments

Redistricting Timeline



Redistricting Requirements

REDISTRICTING CRITERIA

- Districts **must** be population balanced
- Districts **must** be contiguous
- Redistricting **must** be drawn in compliance with all local, state, and federal laws including the Federal Voting Rights Act
- Redistricting **must** not be done to favor or disfavor a protected class or political party
- Districts **should** be as compact as possible
- Districts **should** preserve communities of mutual interest
- Districts **should** preserve the use of existing natural boundaries
- District **should not** split census blocks

Population Balance

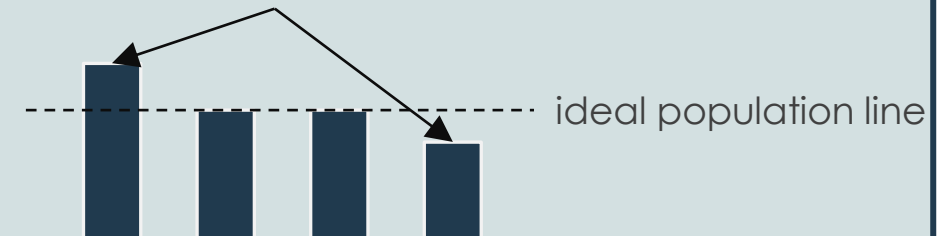
When balancing population, we must consider total population.

This reflects the principle that an elected body represents all residents, not only those who are eligible to vote.

The key metric is deviation range from the “ideal population.”

Ideal population is the total population divided by the number of districts.

Add together the % deviation of the most and least populous districts to determine the deviation range.



Deviation range **must** be below 10%, **should** be below 5%, and always aspire toward 0%.

Redistricting Criteria

CONTIGUITY

Must

NO



YES



- ✓ No islands
- ✓ Exception: real or jurisdictional islands which then must be functionally connected

COMPACTNESS

Should

NO



YES



- ✓ Districts should not be unnecessarily thin or serpentine
- ✓ Compactness will be measured

EXISTING OR NATURAL BOUNDARIES

Should

YES



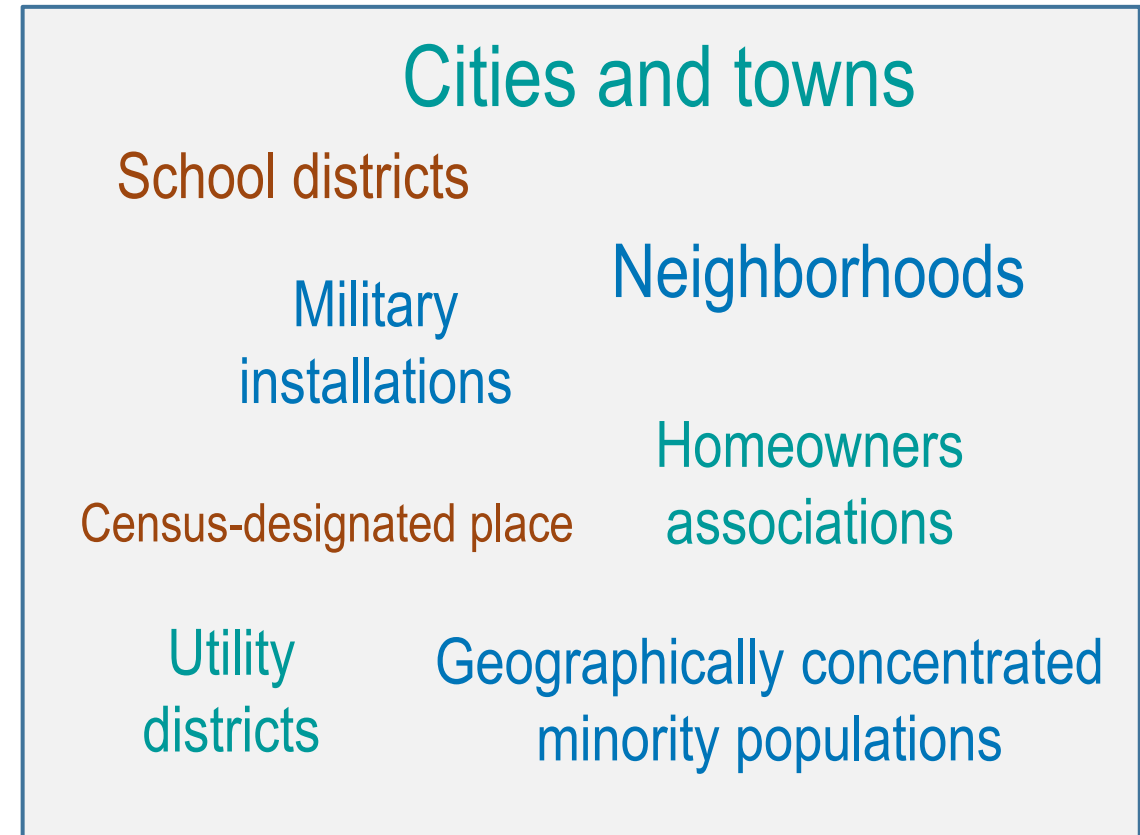
- ✓ Major streets and roads
- ✓ Rivers, lakes, mountains
- ✓ Lines that are already being used as boundaries

Preserving Communities

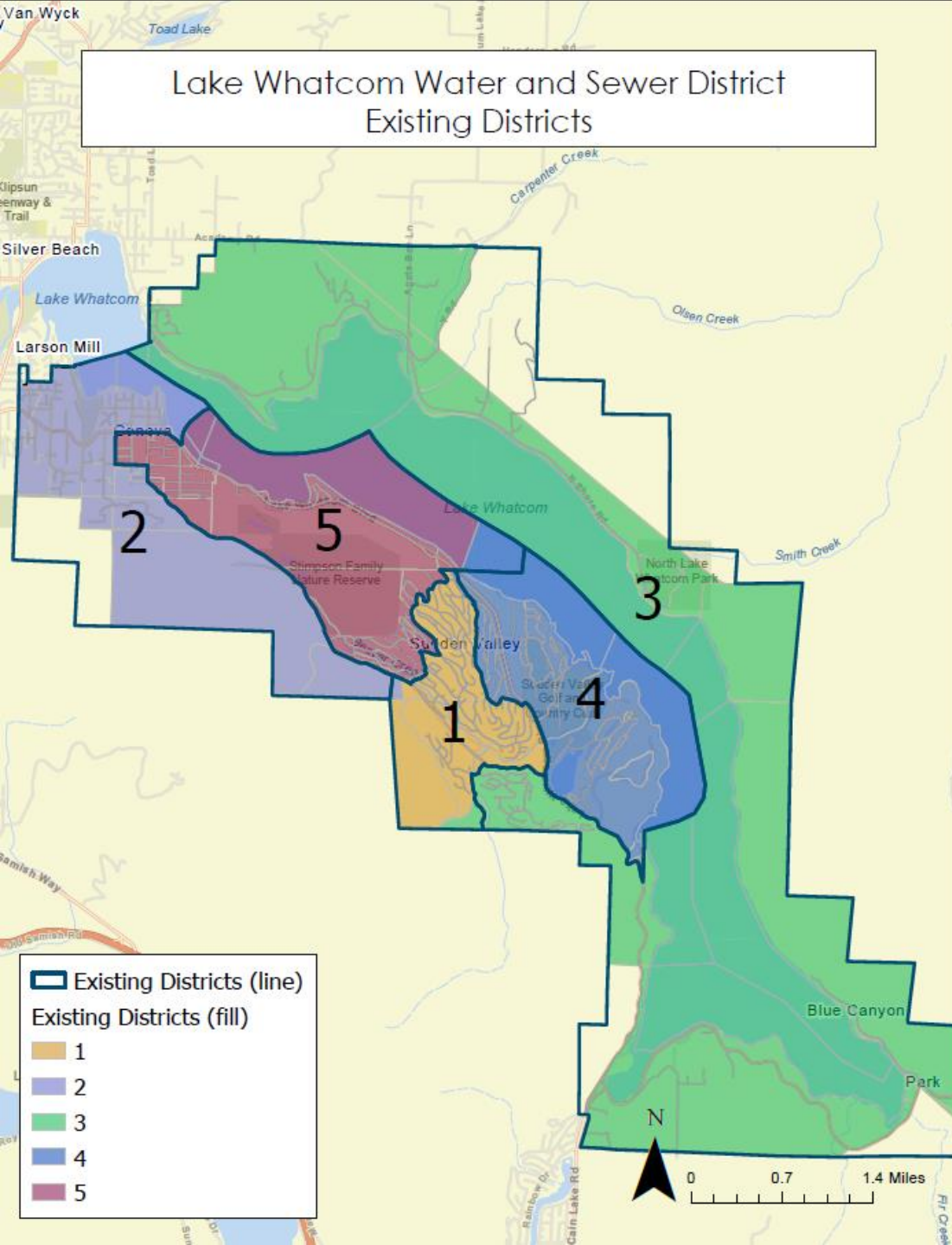
COMMUNITIES OF MUTUAL INTEREST

A community of interest is a population that shares common social and economic interests that should be included within a single district for purposes of its effective and fair representation. There are no concrete rules on how to define a community of interest.

Redistricting **should** preserve communities.



Lake Whatcom Water and Sewer District Existing Districts



Existing Conditions

Equal Population Criterion

Ideal Population	2,142
Overall Deviation	22.8%
<div style="display: flex; justify-content: space-around;"> < 5.0% 5.0 - 10.0% > 10.0% </div>	

Total Population & Deviation per District

District ID	Total Population	Over / Under Ideal	Deviation From Ideal
1	2,416	274	12.8%
2	1,927	-215	-10.0%
3	2,050	-92	-4.3%
4	2,185	43	2.0%
5	2,130	-12	-0.5%

2010

District Population	Ideal District Population	Overall Range	District	District Population	Deviation From Ideal	Population Over / Under Ideal
10,022	2,004	38.4%	1	2,315	15.5%	311
			2	1,914	-4.5%	-90
			3	1,546	-22.9%	-458
			4	2,172	8.4%	168
			5	2,075	3.5%	71

2020

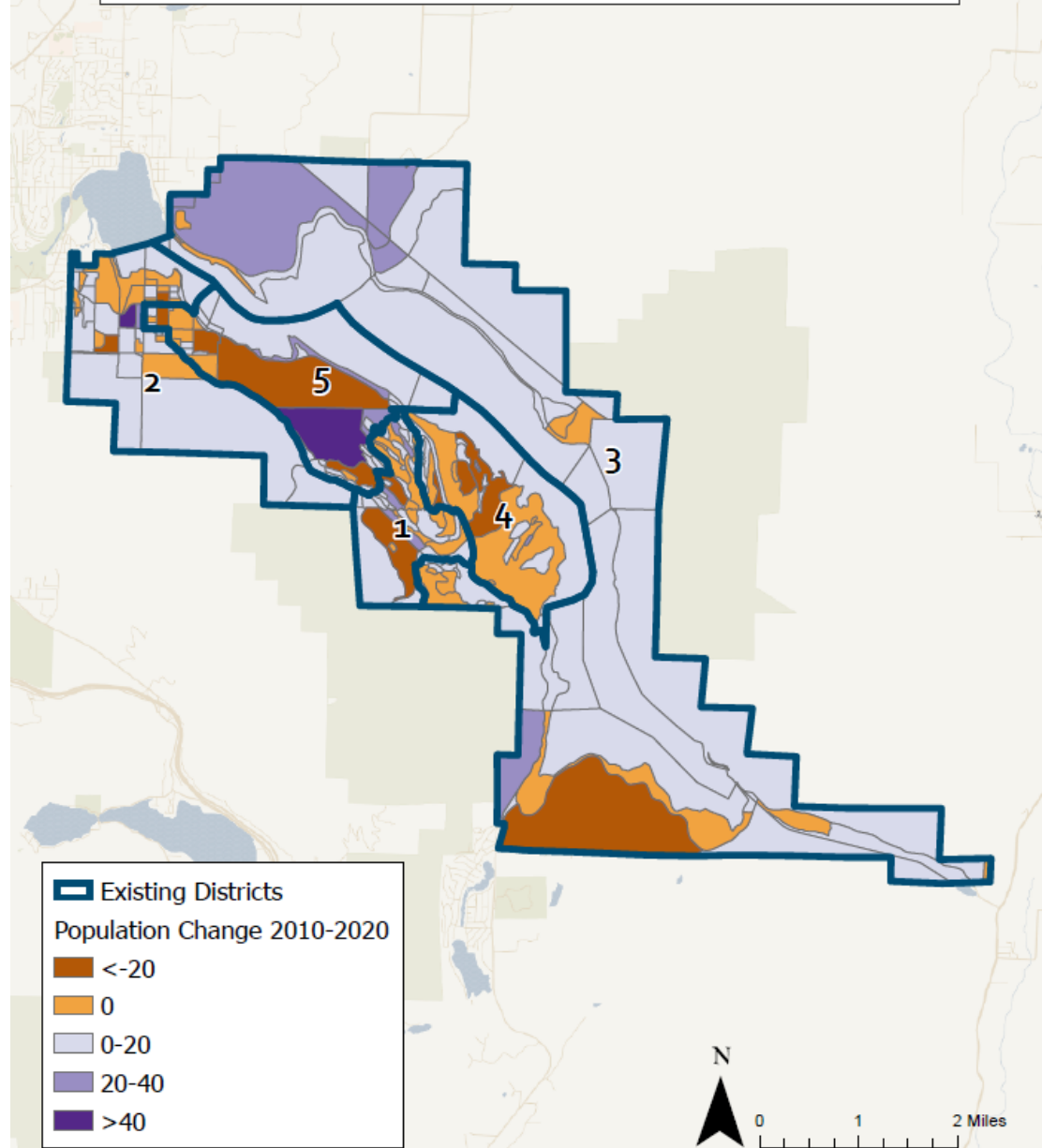
District Population	Ideal District Population	Overall Range	District	District Population	Deviation From Ideal	Population Over / Under Ideal
10,708	2,142	22.8%	1	2,416	12.8%	274
			2	1,927	-10.0%	-215
			3	2,050	-4.3%	-92
			4	2,185	2.0%	43
			5	2,130	-0.5%	-12

Population Difference 2010-2020

District Population Change	Percent District Population Change	District	Population Change per District
667	9.1%	1	101
		2	13
		3	504
		4	13
		5	55

Population Change

Lake Whatcom Water and Sewer District Population Change 2010-2020 per Census Block



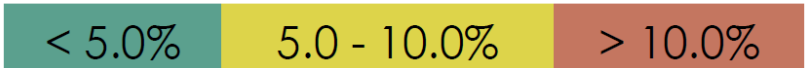
Draft Maps

Lake Whatcom Water and Sewer District
Draft Map 1

Draft Map 1

Equal Population Criterion

Ideal Population	2,142
Overall Deviation	4.7%

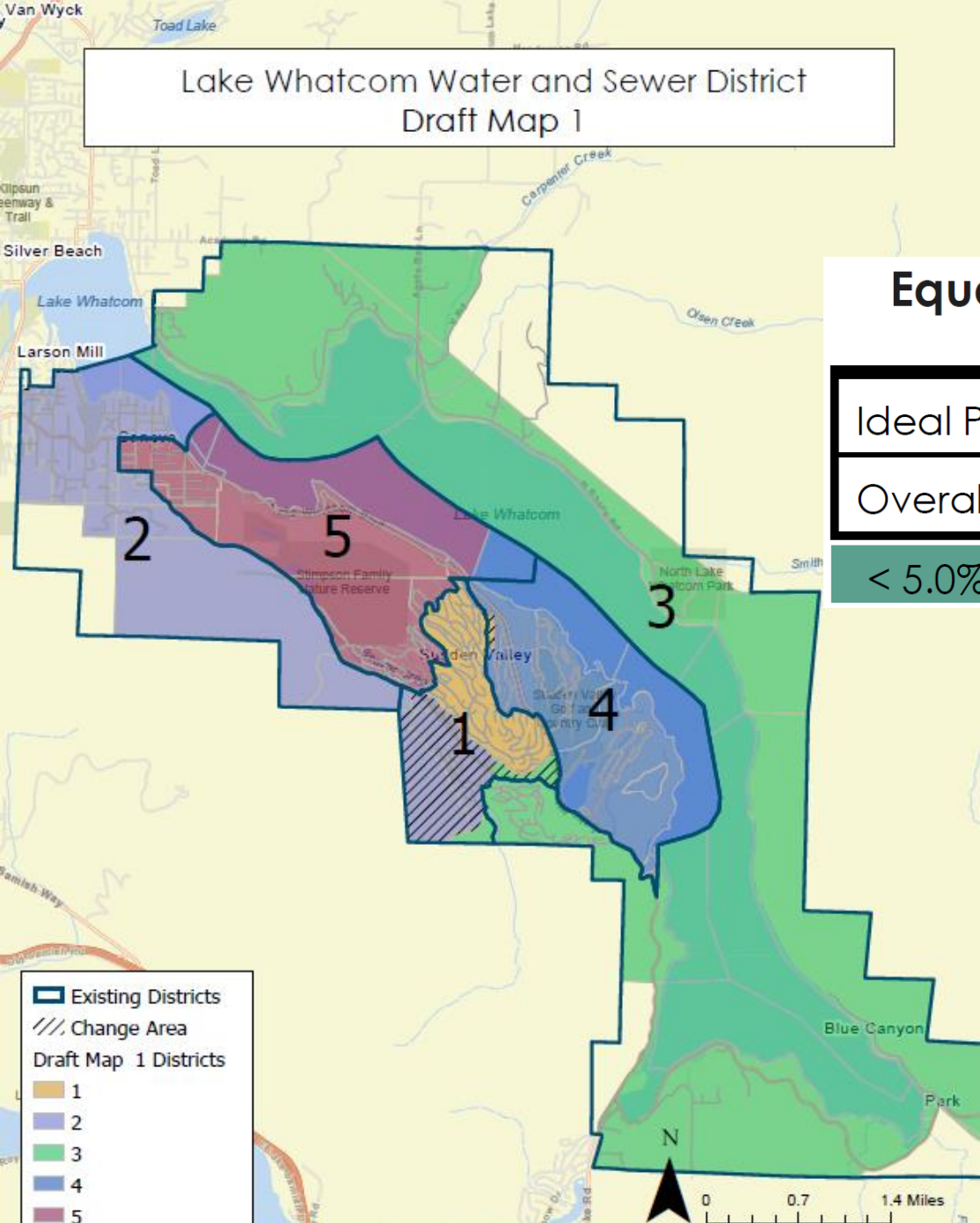


Objectives:

- ✓ Low pop deviation
- ✓ Compactness
- ✓ Contiguity

Total Population & Deviation per District

District ID	Total Population	Over / Under Ideal	Deviation From Ideal
1	2,145	3	0.2%
2	2,190	48	2.3%
3	2,089	-53	-2.5%
4	2,154	12	0.6%
5	2,130	-12	-0.5%



*Only 2020 Census Blocks that have centroids within the existing district boundary are accounted for in the statistics that accompany this map. Census Blocks with centroids outside the existing district boundary are not accounted for in these statistics. Exceptions to this rule based on guidance from the District are the inclusion of blocks 530730008072020, 530730008071031, and 530730008071000, and the exclusion of block 530730008051007 from these summary statistics.

Lake Whatcom Water and Sewer District
Draft Map 2

Draft Map 2

Equal Population Criterion

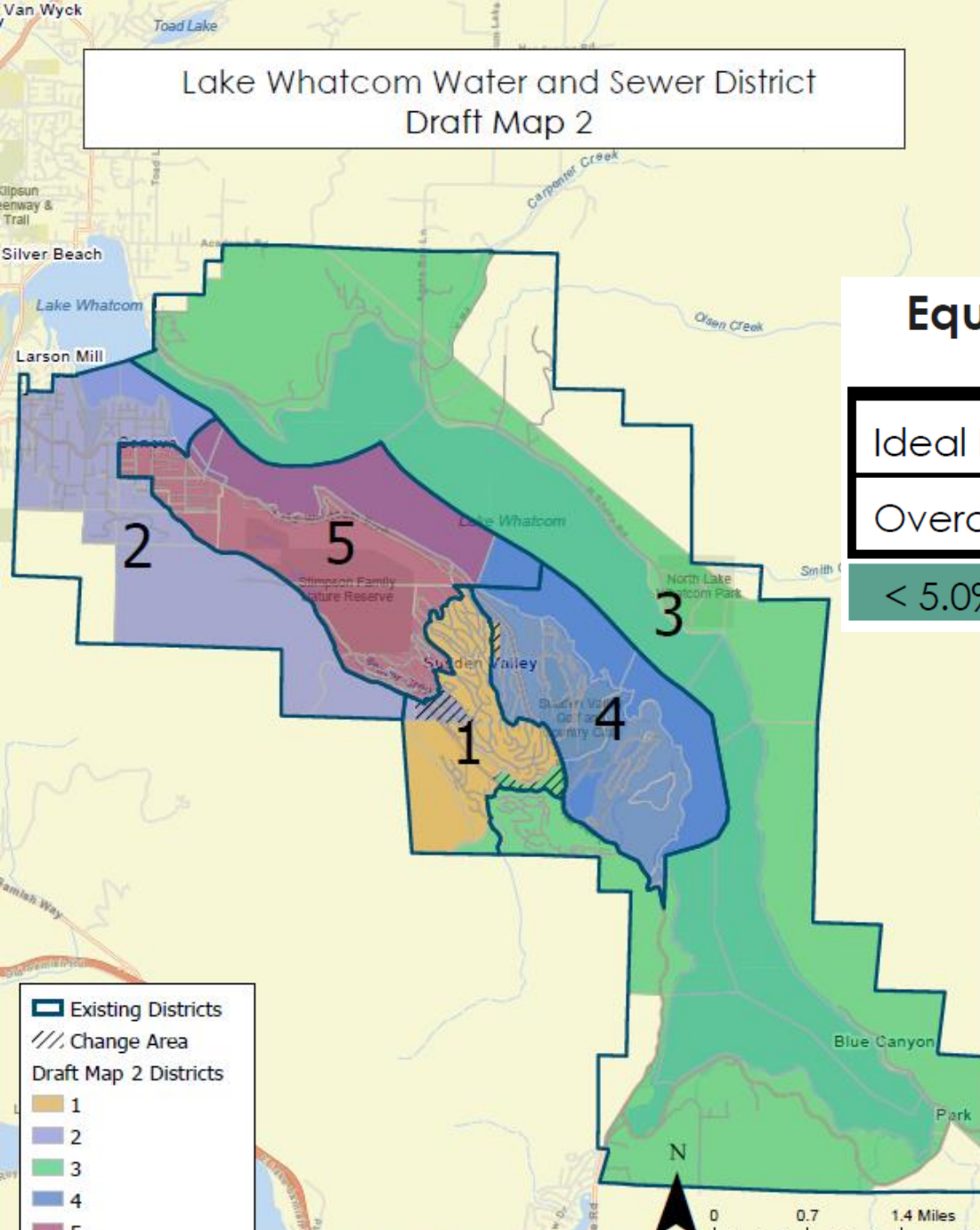
Ideal Population	2,142			
Overall Deviation	4.2%			
<table border="1"> <tr> <td>< 5.0%</td> <td>5.0 - 10.0%</td> <td>> 10.0%</td> </tr> </table>		< 5.0%	5.0 - 10.0%	> 10.0%
< 5.0%	5.0 - 10.0%	> 10.0%		

Objectives:

- ✓ Lowest pop deviation
- ✓ Least change
- ✓ Keep Communities of Interest together to the extent possible

Total Population & Deviation per District

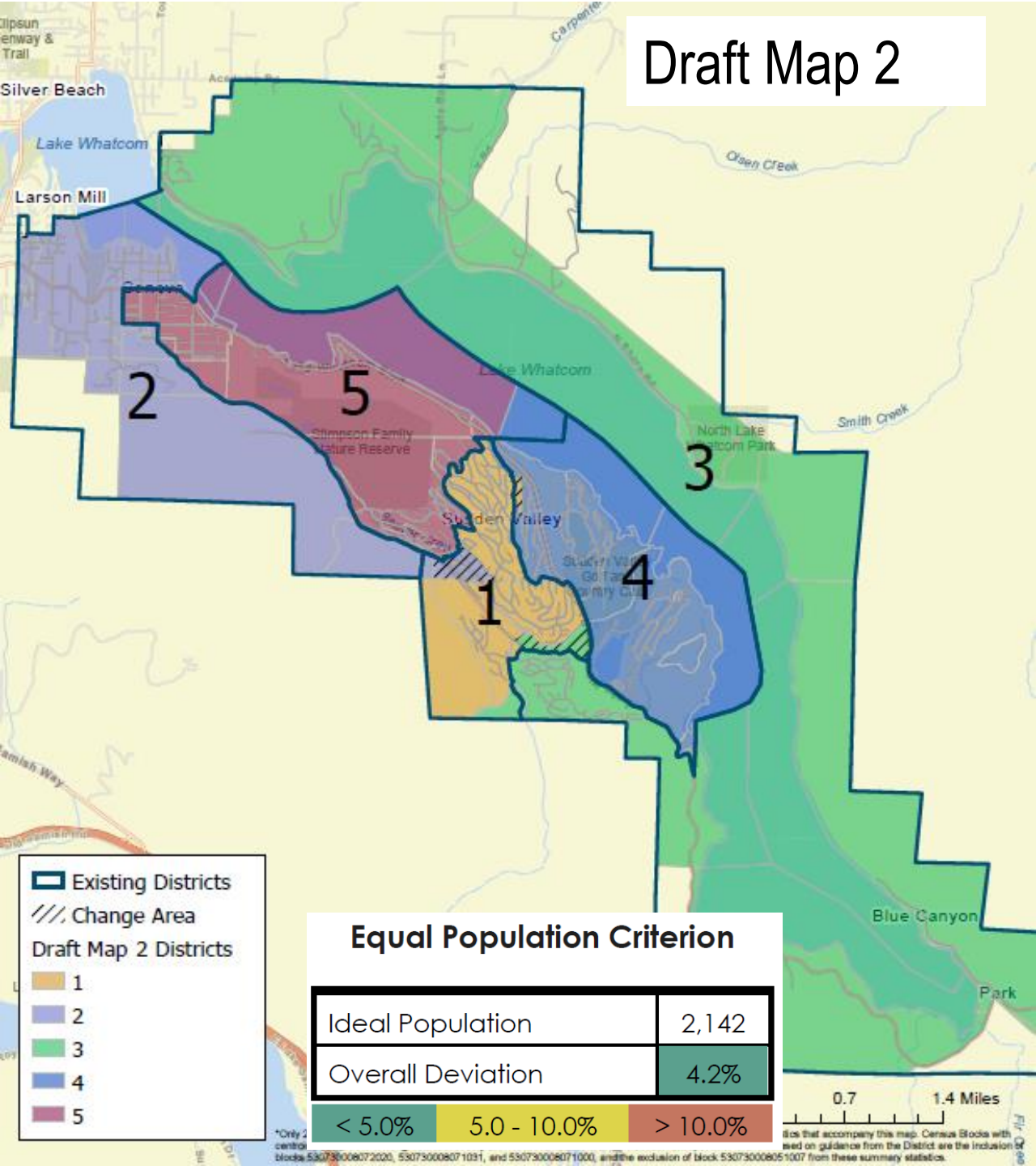
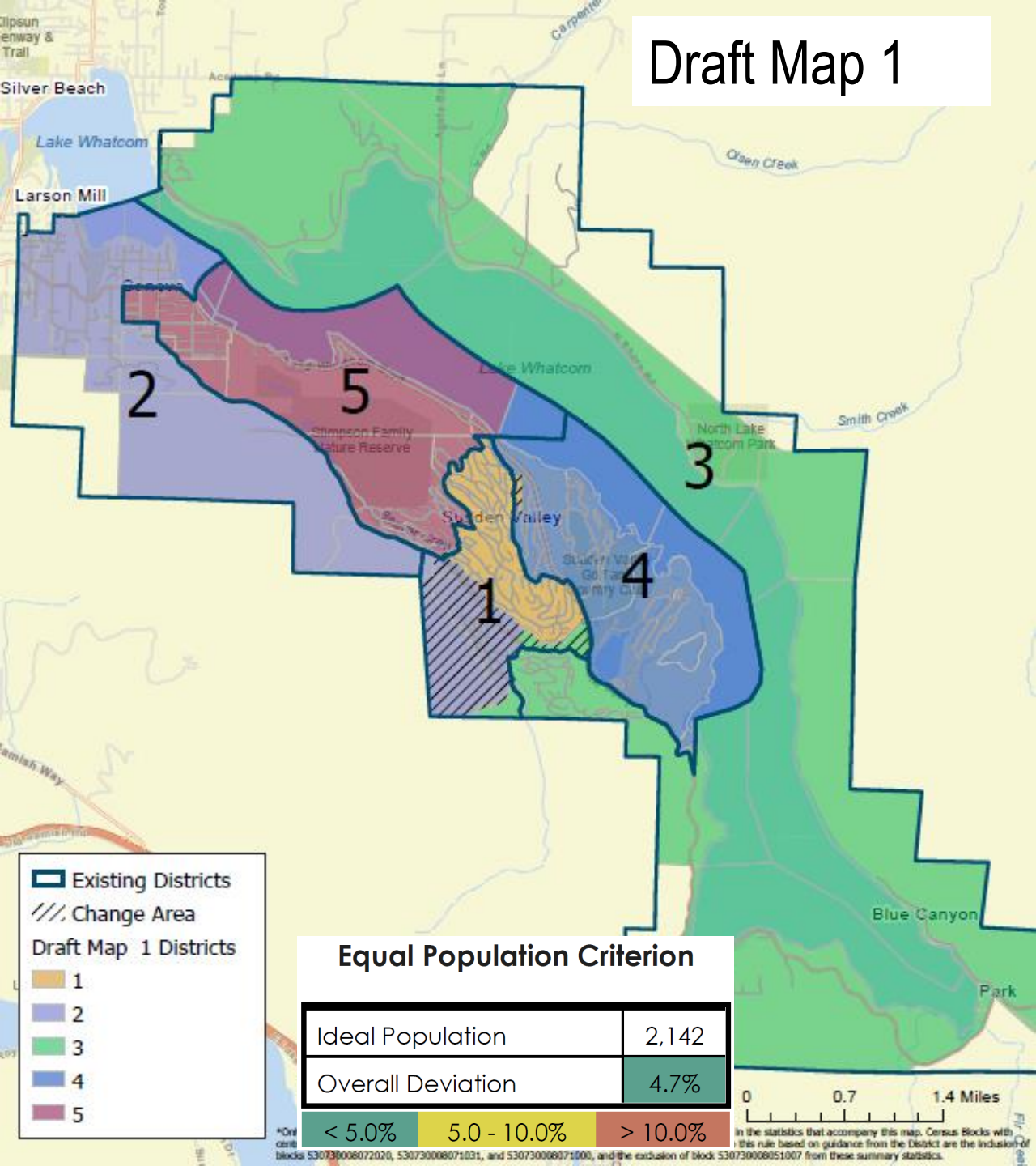
District ID	Total Population	Over / Under Ideal	Deviation From Ideal
1	2,155	13	0.6%
2	2,180	38	1.8%
3	2,089	-53	-2.5%
4	2,154	12	0.6%
5	2,130	-12	-0.5%



*Only 2020 Census Blocks that have centroids within the existing district boundary are accounted for in the statistics that accompany this map. Census Blocks with centroids outside the existing district boundary are not accounted for in these statistics. Exceptions to this rule based on guidance from the District are the inclusion of blocks 53073000807200, 530730008071031, and 530730008071000, and the exclusion of block 530730008051007 from these summary statistics.

Draft Map 1

Draft Map 2



Discussion