

**LAKE WHATCOM WATER AND SEWER DISTRICT
RESOLUTION NO. 882**

**A Resolution of the Board of Commissioners
Updating the Voting Districts for the Positions of Board of Commissioners**

WHEREAS, the Lake Whatcom Water and Sewer District ("District") is a special purpose district authorized under Title 57 Revised Code of Washington ("RCW"); and

WHEREAS, the District is governed by a five (5) member Board of Commissioners ("Board") who, pursuant to RCW 57.12.039, are elected on the basis of residence in commissioner districts; and

WHEREAS, RCW 29A.76.010 requires that each commissioner district "shall be as nearly equal in population as possible to each and every other such district" comprising the special purpose district; and

WHEREAS, the federal decennial census conducted in 2020 has shown that the population of the five existing commissioner districts has changed since the 2010 census, upon which the current commissioner district boundaries are set; and

WHEREAS, RCW 29A.76.010 requires that the District re-establish the commissioner district boundaries in light of the current census information; and

WHEREAS, the District has hired the services of FLO Analytics, an expert in assisting Washington local governments in redistricting, in the development of new commissioner district boundaries that comply with relevant state statutes; and

WHEREAS, the Board held a duly advertised public hearing on the proposed redistricting plan during its regularly scheduled meeting held on March 9, 2022; and

WHEREAS, no public testimony was received on the redistricting plan during the March 9, 2022, public hearing; and

WHEREAS, the Board has considered all information provided by FLO Analytics pertaining to changes in population and commissioner district boundaries; and

WHEREAS, the foregoing recitals are a material part of this Resolution;

NOW, THEREFORE, BE IT RESOLVED by the Board of Commissioners of the Lake Whatcom Water and Sewer District, Whatcom County, Washington as follows:

Section 1. The boundaries of the five commissioner districts of the Lake Whatcom Water and Sewer District are hereby adopted as defined in Exhibit A attached hereto.

Section 2. A map depicting the boundaries of the five commissioner districts is attached hereto as Exhibit B.

Section 3. Any resolutions or parts of resolutions in conflict herewith are hereby repealed insofar as they conflict with the provisions of this Resolution.

Section 4. If any section, subsection, sentence, clause or phrase of this Resolution is for any reason held to be invalid or unconstitutional, such decision shall not affect the validity of the remaining portions of this Resolution. The Board of Commissioners hereby declare that it would have passed this Resolution and each section, subsection, sentence, clause and phrase thereof, irrespective of the fact that any one or more sections, subsections, sentences, clauses or phrases has been declared invalid or unconstitutional, and if, for any reason, this Resolution should be declared invalid or unconstitutional, then the original resolution or resolutions shall be in full force and effect.

Section 5. This Resolution shall be effective immediately.

ADOPTED by the Board of Commissioners of Lake Whatcom Water and Sewer District, Whatcom County, Washington, at a regular meeting thereof, on the 30th day of March, 2022.



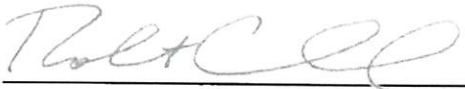
Laura Abele, President, Board of Commissioners

Attest:



Rachael Hope, Recording Secretary

Approved as to form:



Robert Carmichael, Attorney for the District

EXHIBIT A
Commissioner District Census Blocks
Lake Whatcom Water and Sewer District
Whatcom County, Washington

Commissioner District No. 1

Block Code	Block Name	Total Population ¹
530730008081001	Block 1001	7
530730008081008	Block 1008	37
530730008081009	Block 1009	44
530730008081010	Block 1010	77
530730008081011	Block 1011	30
530730008081012	Block 1012	31
530730008081013	Block 1013	42
530730008081014	Block 1014	43
530730008081015	Block 1015	47
530730008081019	Block 1019	31
530730008091000	Block 1000	138
530730008091001	Block 1001	47
530730008091002	Block 1002	22
530730008091003	Block 1003	46
530730008091004	Block 1004	126
530730008091005	Block 1005	36
530730008091006	Block 1006	117
530730008091007	Block 1007	22
530730008091008	Block 1008	41
530730008091009	Block 1009	37
530730008091012	Block 1012	62
530730008091013	Block 1013	70
530730008091014	Block 1014	32
530730008091016	Block 1016	129
530730008091017	Block 1017	62
530730008091018	Block 1018	93
530730008091019	Block 1019	12
530730008091020	Block 1020	212
530730008091021	Block 1021	21
530730008091022	Block 1022	78
530730008091023	Block 1023	0
530730008091024	Block 1024	44
530730008092000	Block 2000	53
530730008092001	Block 2001	69

530730008092002	Block 2002	26
530730008092003	Block 2003	27
530730008092004	Block 2004	116
530730008092006	Block 2006	18

¹ Population reported in the 2020 census conducted by the U.S. Census Bureau

Commissioner District No. 2

Block Code	Block Name	Total Population ¹
530730008051010	Block 1010	22
530730008051011	Block 1011	28
530730008051012	Block 1012	53
530730008051019	Block 1019	43
530730008051020	Block 1020	3
530730008051023	Block 1023	9
530730008051024	Block 1024	24
530730008051025	Block 1025	5
530730008051026	Block 1026	68
530730008051027	Block 1027	189
530730008051028	Block 1028	135
530730008051029	Block 1029	55
530730008051030	Block 1030	1
530730008051031	Block 1031	39
530730008051032	Block 1032	12
530730008051033	Block 1033	25
530730008051034	Block 1034	30
530730008051035	Block 1035	6
530730008051036	Block 1036	0
530730008051037	Block 1037	0
530730008051038	Block 1038	22
530730008051039	Block 1039	67
530730008051040	Block 1040	57
530730008051041	Block 1041	0
530730008051042	Block 1042	64
530730008051043	Block 1043	30
530730008051049	Block 1049	5
530730008052003	Block 2003	267
530730008052004	Block 2004	64
530730008052005	Block 2005	83
530730008052006	Block 2006	88
530730008052007	Block 2007	0

530730008052008	Block 2008	0
530730008052009	Block 2009	0
530730008052010	Block 2010	117
530730008052011	Block 2011	0
530730008052012	Block 2012	26
530730008052013	Block 2013	41
530730008052014	Block 2014	0
530730008052015	Block 2015	35
530730008052016	Block 2016	15
530730008052017	Block 2017	5
530730008052018	Block 2018	33
530730008052023	Block 2023	19
530730008052025	Block 2025	92
530730008052027	Block 2027	50
530730008072025	Block 2025	0
530730008091010	Block 1010	36
530730008091011	Block 1011	37
530730008092017	Block 2017	0
530730008092019	Block 2019	0
530730008092020	Block 2020	0
530730008092021	Block 2021	168
530730008092022	Block 2022	22

¹ Population reported in the 2020 census conducted by the U.S. Census Bureau

Commissioner District No. 3

Block Code	Block Name	Total Population ¹
530730001011013	Block 1013	21
530730001011014	Block 1014	61
530730001011016	Block 1016	0
530730008041011	Block 1011	443
530730008041012	Block 1012	66
530730008041013	Block 1013	0
530730008041026	Block 1026	61
530730008041027	Block 1027	53
530730008041028	Block 1028	181
530730008041029	Block 1029	0
530730008041030	Block 1030	0
530730008041032	Block 1032	127
530730008071000	Block 1000	42
530730008071002	Block 1002	6

530730008071003	Block 1003	7
530730008071004	Block 1004	0
530730008071005	Block 1005	16
530730008071006	Block 1006	22
530730008071009	Block 1009	68
530730008071031	Block 1031	217
530730008071032	Block 1032	9
530730008072002	Block 2002	96
530730008072007	Block 2007	0
530730008072008	Block 2008	19
530730008072009	Block 2009	0
530730008072010	Block 2010	85
530730008072011	Block 2011	53
530730008072013	Block 2013	0
530730008072014	Block 2014	0
530730008072015	Block 2015	0
530730008072016	Block 2016	0
530730008072017	Block 2017	0
530730008072018	Block 2018	10
530730008072020	Block 2020	0
530730008072021	Block 2021	96
530730008072022	Block 2022	54
530730008072023	Block 2023	16
530730008072024	Block 2024	19
530730008072026	Block 2026	88
530730008072027	Block 2027	25
530730008072028	Block 2028	31
530730008072029	Block 2029	49
530730008072030	Block 2030	9
530730008072032	Block 2032	0
530730008091015	Block 1015	39

¹ Population reported in the 2020 census conducted by the U.S. Census Bureau

Commissioner District No. 4

Block Code	Block Name	Total Population ¹
530730008072019	Block 2019	0
530730008081000	Block 1000	258
530730008081002	Block 1002	86
530730008081003	Block 1003	112
530730008081004	Block 1004	42

530730008081005	Block 1005	42
530730008081016	Block 1016	115
530730008081017	Block 1017	118
530730008081018	Block 1018	34
530730008081020	Block 1020	61
530730008081021	Block 1021	62
530730008082004	Block 2004	0
530730008082005	Block 2005	277
530730008082006	Block 2006	31
530730008082007	Block 2007	43
530730008082008	Block 2008	31
530730008082009	Block 2009	503
530730008082010	Block 2010	44
530730008082011	Block 2011	4
530730008082012	Block 2012	106
530730008082013	Block 2013	24
530730008082014	Block 2014	11
530730008082015	Block 2015	99
530730008082016	Block 2016	0
530730008082017	Block 2017	0
530730008082018	Block 2018	51

¹ Population reported in the 2020 census conducted by the U.S. Census Bureau

Commissioner District No. 5

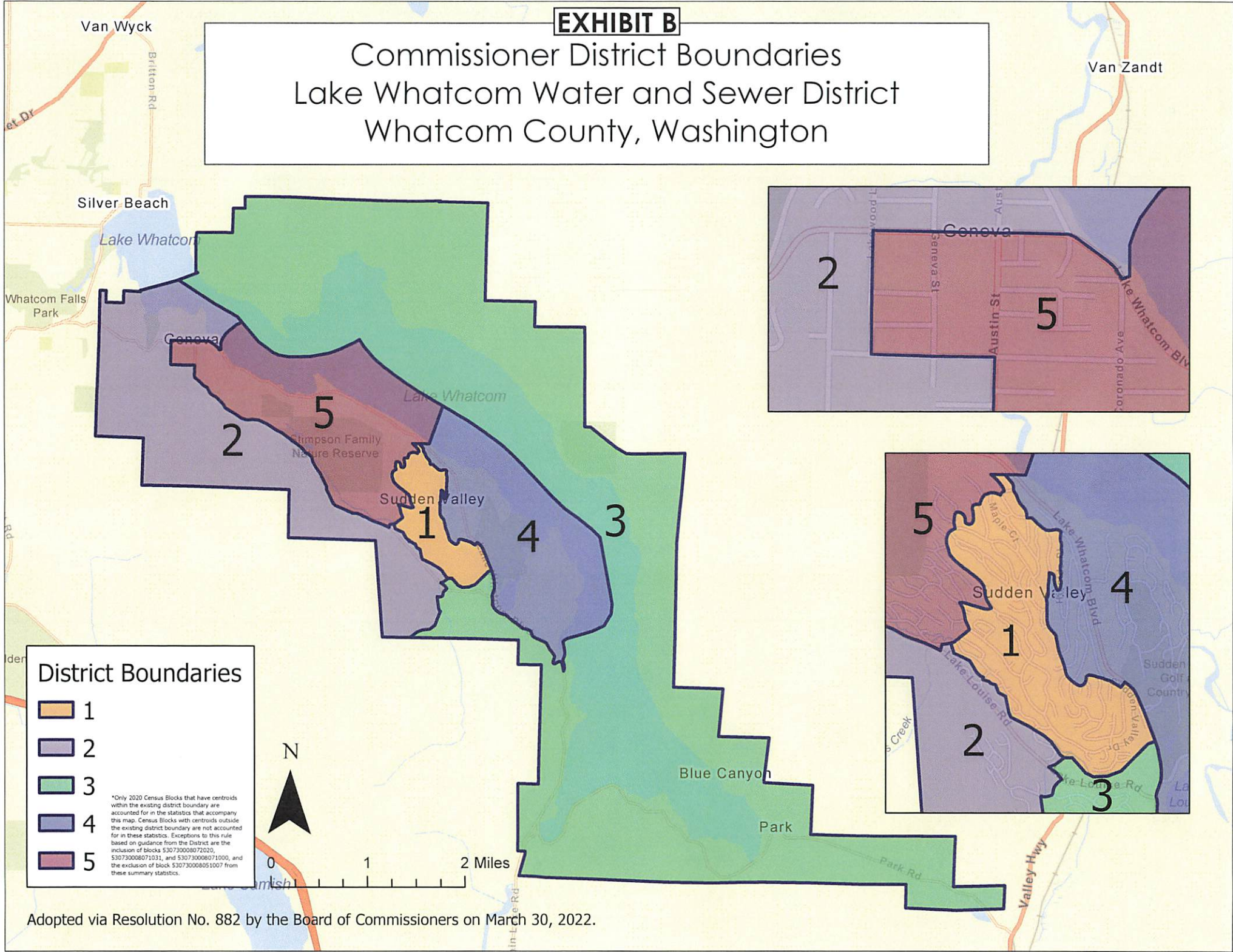
Block Code	Block Name	Total Population ¹
530730008051050	Block 1050	33
530730008052019	Block 2019	38
530730008052020	Block 2020	65
530730008052021	Block 2021	17
530730008052022	Block 2022	167
530730008052024	Block 2024	33
530730008052026	Block 2026	26
530730008053000	Block 3000	167
530730008053001	Block 3001	34
530730008053002	Block 3002	0
530730008053003	Block 3003	0
530730008053004	Block 3004	31
530730008053005	Block 3005	185
530730008053006	Block 3006	0
530730008053007	Block 3007	81

530730008053008	Block 3008	25
530730008053009	Block 3009	31
530730008053010	Block 3010	18
530730008053011	Block 3011	56
530730008053012	Block 3012	43
530730008053013	Block 3013	120
530730008053014	Block 3014	41
530730008053015	Block 3015	193
530730008053016	Block 3016	20
530730008081006	Block 1006	12
530730008081007	Block 1007	13
530730008082000	Block 2000	0
530730008082001	Block 2001	0
530730008082002	Block 2002	0
530730008082003	Block 2003	0
530730008092005	Block 2005	33
530730008092007	Block 2007	34
530730008092008	Block 2008	13
530730008092009	Block 2009	36
530730008092010	Block 2010	259
530730008092011	Block 2011	58
530730008092012	Block 2012	32
530730008092013	Block 2013	90
530730008092014	Block 2014	34
530730008092015	Block 2015	28
530730008092016	Block 2016	39
530730008092023	Block 2023	25

¹ Population reported in the 2020 census conducted by the U.S. Census Bureau

EXHIBIT B

Commissioner District Boundaries Lake Whatcom Water and Sewer District Whatcom County, Washington



Adopted via Resolution No. 882 by the Board of Commissioners on March 30, 2022.